



TRI TOOL INC.

3041 Sunrise Blvd. • Rancho Cordova, CA 95742-6502 • (888) TRITool • MAIN (916) 288-6100 • FAX (916) 288-6160
www.tritool.com customer.service@tritool.com

TRI TOOL INC.
TECHNICAL SPECIFICATION
MODEL 208B BEVELMASTER® EM (ELBOW MANDREL) KIT
SEPTEMBER 2010

Model 208B BEVELMASTER® EM (ELBOW MANDREL) Kit

The Model 208B BEVELMASTER® EM is provided to be used in conjunction with a Model 208B BEVELMASTER® in short perch length applications. Only .75" (19.1 mm) of bore length is required for mounting to fit within most elbows and weld neck flanges.

The Model 208B BEVELMASTER® EM Kit comes complete with:

▪ Mandrel	1 ea.
▪ Plug	1 ea.
▪ Push Rod Assembly	1 ea.
▪ #1 Elbow Mandrel Head Assembly	1 ea.
▪ #2 Elbow Mandrel Head Assembly	1 ea.
▪ #3 Elbow Mandrel Head Assembly	1 ea.
▪ #4 Elbow Mandrel Head Assembly	1 ea.
▪ #5 Elbow Mandrel Head Assembly	1 ea.
▪ Carrying Case	1 ea.
▪ All required operator's wrenches	1 set
▪ Operator's Manual	1 ea.

Design and Operating Features

1. The elbow mandrel can be set up in the bore before the 208B is installed onto the mandrel shaft.
2. The mandrel heads have interchangeable contact pins to allow configuring mandrel sub-assemblies for different inside diameter mounting ranges.
3. A perch length of only .75" (19.1 mm) is required.
4. Self-centering, push rod actuated locking.

Specifications

1. Reference Envelope Drawing No.: 77-1715
2. Weight
 - A. 15 lbs (33.1 kg)
3. Pipe Holding Capacities
 - A. Basic Pipe Sizes
 - i. 2" – Schedule 20 through 160
 - ii. 2 1/2" through 6" pipe - All schedules*
 - iii. 8" - Schedule 20 through schedule 160

*Not recommended for schedule 10 and lighter pipe unless a butt weld prep only is required.
 - B. Inside Diameter Mounting Range
 - i. 1.63" (41.4 mm) through 8.40" (213.3 mm)
4. Mounting
 - A. .75" (19.1 mm) axial length, 3 pin contact.
5. Material
 - A. Hardened steel contact pins.

Accessories (Optional)

1. Small Elbow Mandrel Assembly (P/N 06-0531)
2. Adjustable Centering Pin Kit for centerline adjustment of Mandrel Assembly (P/N 05-0609)
3. Squaring Plate Kit (P/N 05-1328)

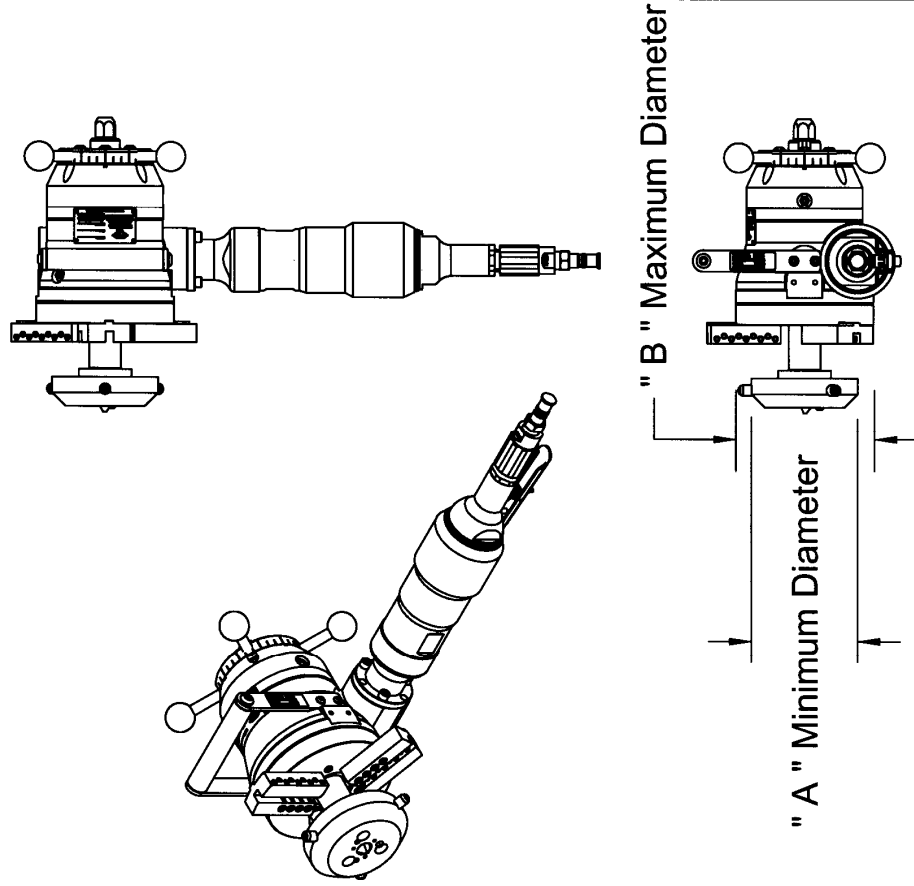
Note To The Customer

Spare Parts and Standard Tool Bits are available from stock. Engineering design services for custom tool bits and special function modifications are available from the factory.

All Tri Tool Inc. and allied equipment products are subject to design improvements and specification changes at any time with no obligation to units already sold.


Warranty (limited): Parts and equipment are warranted against defects in material and workmanship for a period of one (1) year from date of purchase. Full details supplied on request and/or with the tools.

Filter, regulator and lubricator are required to protect the warranty on air powered tools.



Head Assembly P/N	Contact Pin P/N	ID Mounting Range		Pin Length
		"A" DIA Minimum	"B" DIA Maximum	
06-0531	32-0294	1.63" (41.4 mm)	2.11" (53.6 mm)	.748" (19.0 mm)
	32-0295	2.11" (53.6 mm)	2.56" (65.0 mm)	.985" (25.0 mm)
21-0212*	32-0296	2.51" (63.8 mm)	2.98" (75.7 mm)	1.191" (30.3 mm)
	32-0297	2.98" (75.7 mm)	3.45" (87.6 mm)	1.427" (36.2 mm)
21-0213*	32-0298	3.40" (86.4 mm)	3.87" (98.3 mm)	1.634" (41.5 mm)
	32-0299	3.87" (98.3 mm)	4.34" (110.2 mm)	1.870" (47.5 mm)
21-0214*	32-0300	4.29" (109.0 mm)	4.76" (120.9 mm)	2.077" (52.8 mm)
	32-0301	4.76" (120.9 mm)	5.23" (132.8 mm)	2.313" (58.8 mm)
21-0215*	32-0302	5.17" (131.3 mm)	5.65" (143.5 mm)	2.520" (64.0 mm)
	32-0303	5.65" (143.5 mm)	6.12" (155.4 mm)	2.756" (70.0 mm)
21-0738*	32-0780	6.04" (153.4 mm)	6.53" (165.8 mm)	2.963" (75.3 mm)
	32-0781	6.51" (165.4 mm)	7.00" (177.8 mm)	3.200" (81.2 mm)
21-0738*	32-0782	6.99" (177.5 mm)	7.48" (189.9 mm)	3.440" (87.4 mm)
	32-0783	7.47" (189.7 mm)	7.96" (202.1 mm)	3.680" (93.5 mm)
32-0784	7.91" (200.9 mm)	8.40" (213.3 mm)	3.900" (99.1 mm)	

*These mandrel assemblies make up the Elbow Mandrel Kit (P/N 05-0605)

 TRI TOOL INC 3041 SUNRISE BLVD., RANCHO CORDOVA, CA 95742		ENVELOPE DRAWING	
		MODEL 208B ELBOW MANDREL	
CONTRACT NO.	APPROVALS	DATE	REV.
	J. GEISZLER	7/19/10	
	CHECKED		SIZE
	ISSUED		SOLID WORKS DWG. NO. 77-1715
			SCALE
			NONE
			CAD MODEL: SHEET 1 OF 1

COMPANY CONFIDENTIAL
 PROPRIETARY PROPERTY OF TRI TOOL INC.
 NO REPRODUCTION, USE, OR DUPLICATION OF THE
 DESIGNS SHOWN HEREON IS PERMITTED WITHOUT
 EXPRESS WRITTEN CONSENT FROM TRI TOOL INC.
 3041 SUNRISE BLVD., RANCHO CORDOVA, CA 95742
 COPYRIGHT TRI TOOL INC.